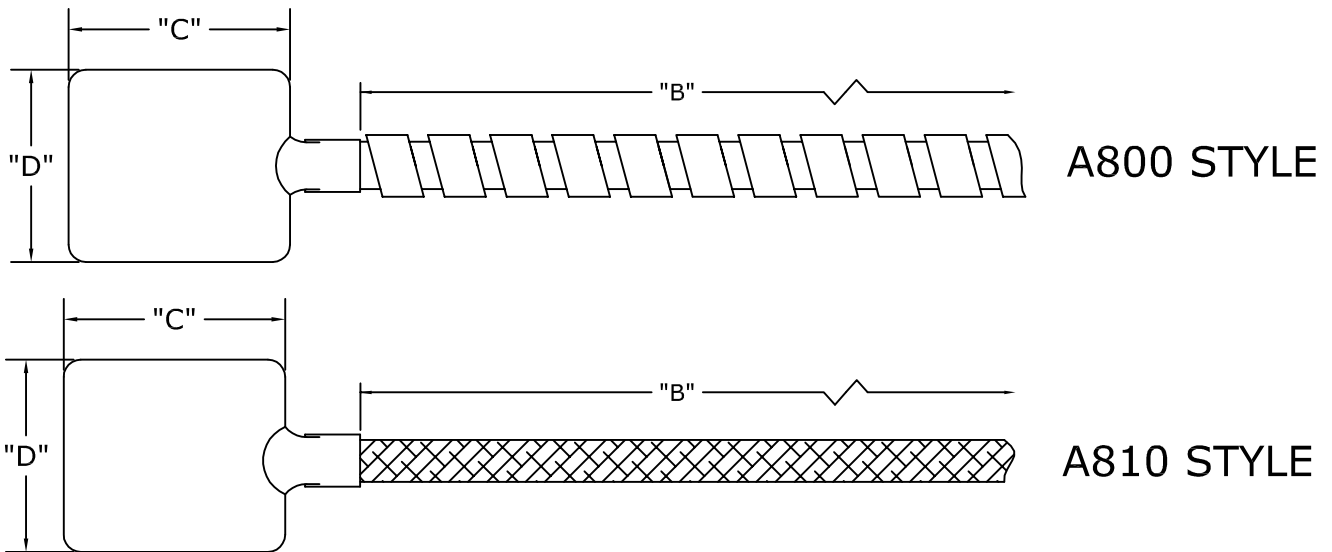
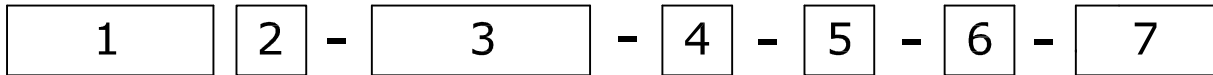


UNDER THE BAND STYLE THERMOCOUPLES AND RTDs



Under the band style thermocouples and RTD's are a variety of surface measurement sensors. They are commonly used in pipes and held in place with the use of a pipe clamp, or on barrels and nozzles under a band heater. Acrolab offers these with a brass shim as a standard, but are available with SS upon request.



Example A800 J - 12 - 1 - 1 - 0 - U

1. THERMOCOUPLE STYLE	
A800	Under the Band Style with SS Armor
A810	Under the Band Style with SS Braid

4. "C" LENGTH	
Specify in Inches	

2. CALIBRATION TYPE	
J	IRON / CONSTANTAN
K	CHROMEL / ALUMEL
T	COPPER / CONSTANTAN
RTD2	100 OHM, 2 WIRE
RTD3	100 OHM, 3 WIRE
RTD4	100 OHM, 4 WIRE
JJ	DUAL IRON / CONSTANTAN
KK	DUAL CHROMEL / ALUMEL
TT	DUAL COPPER / CONSTANTAN
RTD/RTD2	DUAL 100 OHM, 2 WIRE
RTD/RTD3	DUAL 100 OHM, 3 WIRE
RTD/RTD4	DUAL 100 OHM, 4 WIRE

5. "D" LENGTH	
Specify in Inches	

6. TERMINATION TYPE	
0	Leads Not Stripped
1	Standard Male Plug
2	Standard Female Jack
3	BX Connector & 4" Stripped Leads with Spade Lugs
4	4" Stripped Leads with Spade Lugs

3. "B" LENGTH	
Specify in Inches	

7. OPTIONS	
U	Ungrounded
SS	Stainless Steel Shim
99	Fiberglass Wire Without Stainless Steel Overbraid (A810 Only)
AA	Special Construction, Describe