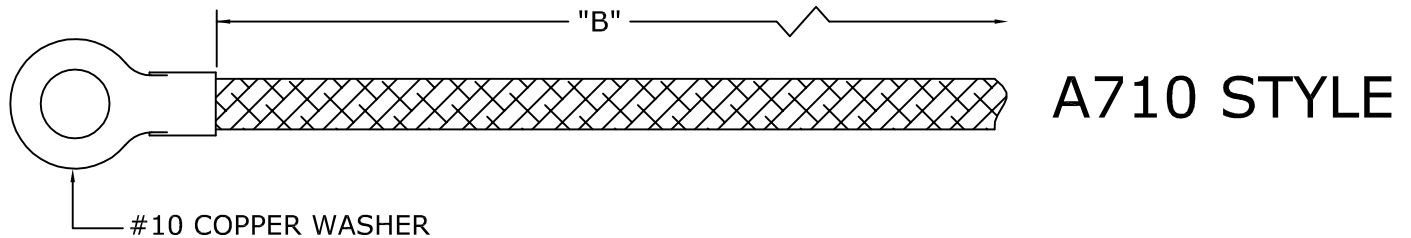
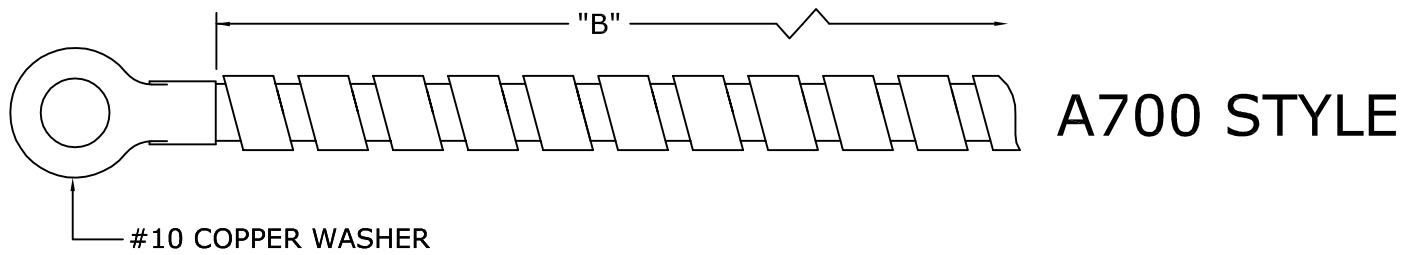
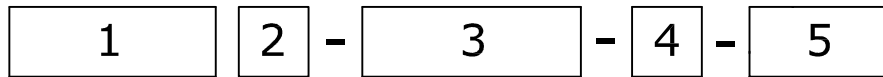


RING STYLE THERMOCOUPLES AND RTDs



Acrolab's ring style thermocouples and RTD's are designed for any surface measurement application. They are attached to a surface simply with a screw or bolt. They are available with SS armoured leads or SSOB leads. Many washer sizes and lead types are available upon request.



Example A700 J - 12 - 4 - U

1. THERMOCOUPLE STYLE	
A700	Ring Style with SS Armor
A710	Ring Style with SS Braid

2. CALIBRATION TYPE	
J	Iron/Constantan
K	Chromel/Alumel
T	Copper/Constantan
RTD2	100 Ohm, 2 Wire
RTD3	100 Ohm, 3 Wire
RTD4	100 Ohm, 4 Wire
JJ	Dual Iron/Constantan
KK	Dual Chromel/Alumel
TT	Dual Copper/Constantan
RTD/RTD2	Dual 100 Ohm, 2 Wire
RTD/RTD3	Dual 100 Ohm, 3 Wire
RTD/RTD4	Dual 100 Ohm, 4 Wire

3. B" LENGTH	
Specify in Inches	

4. TERMINATION TYPE	
0	Leads Not Stripped
1	Standard Male Plug
2	Standard Female Jack
3	BX Connector & 4" Stripped Leads with Spade Lugs
4	4" Stripped Leads with Spade Lugs

5. OPTIONS	
U	Ungrounded
M	Hi Temperature Washer
99	Fiberglass Wire Without Stainless Steel Overbraid
AA	Special Construction, Describe