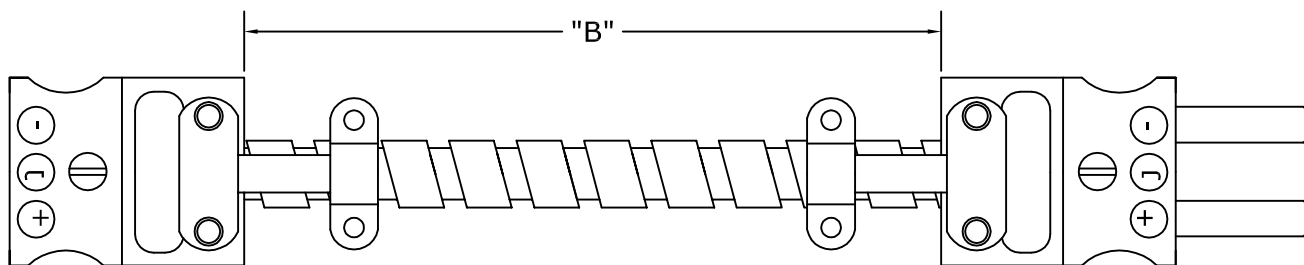


THERMOCOUPLE AND RTD EXTENSION CABLES



A900 STYLE

Thermocouple and RTD extension cables are available with a wide variety of leadwires and protection such as SS armour and over braid, as well as many termination options and lengths. They are used to provide connections between sensors, jack panels or various instrumentation.

1 - 2 - 3 - 4 - 5 - 6

Example A800 J - 12 - 1 - 1 - 9

1. THERMOCOUPLE STYLE	
A800	Armored Extension Cable
A810	Stainless Steel Over Braid Extension Cable

2. CALIBRATION TYPE	
J	IRON / CONSTANTAN
K	CHROMEL / ALUMEL
T	COPPER / CONSTANTAN
RTD2	100 OHM, 2 WIRE
RTD3	100 OHM, 3 WIRE
RTD4	100 OHM, 4 WIRE
JJ	DUAL IRON / CONSTANTAN
KK	DUAL CHROMEL / ALUMEL
TT	DUAL COPPER / CONSTANTAN
RTD/RTD2	DUAL 100 OHM, 2 WIRE
RTD/RTD3	DUAL 100 OHM, 3 WIRE
RTD/RTD4	DUAL 100 OHM, 4 WIRE

3. "B" LENGTH	
Specify in Inches	

4. "X" TERMINATION	
0	Leads Not Stripped
1	Standard Male Plug
1M	Miniature Male Plug
2	Standard Female Jack
2M	Miniature Female Jack
3	BX Connector & 4" Stripped Leads with Spade Lugs
4	4" Stripped Leads with Spade Lugs

5. "Y" TERMINATION	
0	Leads Not Stripped
1	Standard Male Plug
1M	Miniature Male Plug
2	Standard Female Jack
2M	Miniature Female Jack
3	BX Connector & 4" Stripped Leads with Spade Lugs
4	4" Stripped Leads with Spade Lugs

6. OPTIONS	
9	Fiberglass Wire With Stainless Steel Overbraid
99	Fiberglass Wire Without Stainless Steel Overbraid (no armor)
AA	Special Construction, Describe