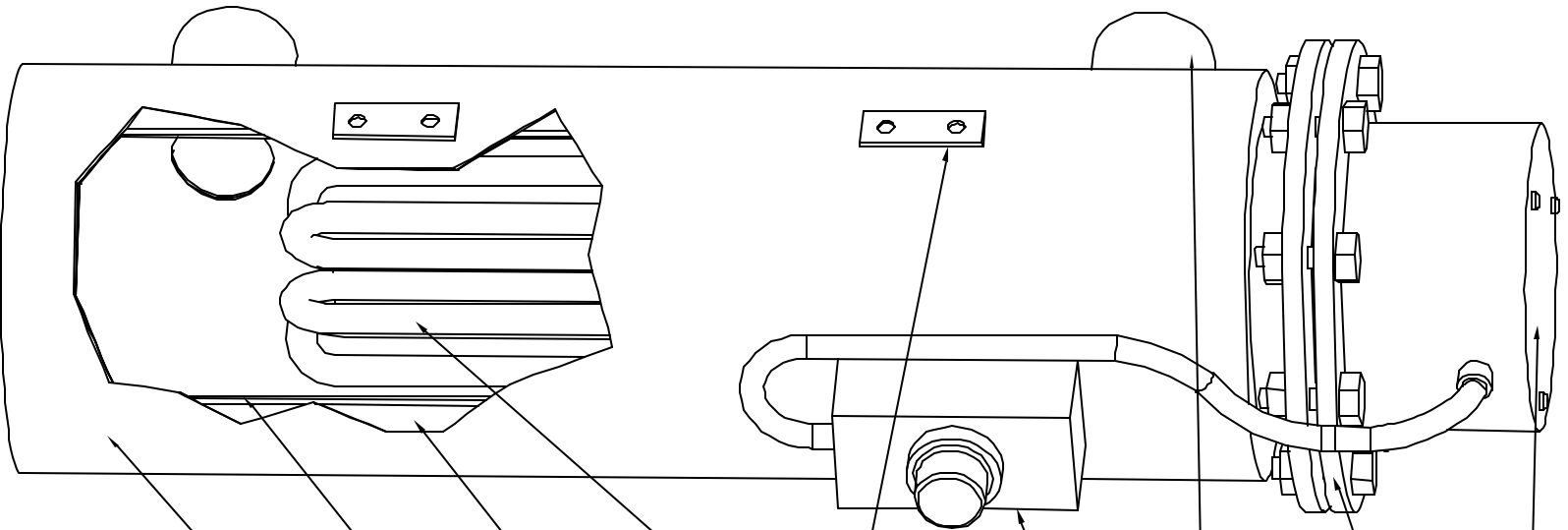


# CIRCULATION HEATERS



- ◇ Standard NEMA 1 terminal housing or optional Explosion Resistant NEMA 7 or Moisture Proof NEMA 4. Terminal housing contains instruction manual for maintenance and installation along with a wiring diagram.
- ◇ 1 1/4" and 2 1/2" Screw Plug Heaters for smaller units and 3" to 14" heaters for Flanged Immersion Heaters. Forged Steel rated at 150 lb. is used to make the flanges. Optional 300 lb. rating or stainless steel flanges are available. Threaded eyebolts for easy installation are also included.
- ◇ 10" or larger units use 150 lb. rated flanges as standard inlet-outlet connections. NPT pipe threads (with optional flanges) are available for 3" to 8" Circulation Heaters for inlet-outlet connections.
- ◇ Options such as a capillary type thermostat and double-pole non-indicating bulb can be attached to the insulation jacket (in picture) or in the terminal box. Solid state temperature controllers and indicating thermostats are also available. Temperature protection can be provided by including a thermocouple with one of the elements.
- ◇ Threaded Mounting Lugs are welded to the steel casing to support the unit if necessary. Your structure can also be fitted with a custom support system.
- ◇ Different Sheath materials for the heating elements can be selected to meet any corrosion resistance standards. Smaller Circulation units with screw plug heaters, the element diameter is 0.315" or 0.475". The larger flanged heaters have an element diameter of 0.475".
- ◇ 1" thick insulation rated to 750°F (399°C) surrounds the vessel to decrease heat loss. High temperature ceramic fiber insulation or extra insulation are also optional. Uninsulated vessels are also available.
- ◇ Vessel is made from SA533B or SA106B steel, rated to withstand temperatures up to 750°F (399°C). A drain plug is included at the bottom of the tank for cleaning and drainage purposes. Stainless Steel vessel is also available.
- ◇ Outer steel jacket is painted with rust and corrosion resistant paint. Jacket also protects and keeps insulation dry from the surrounding environment. Options include rain-tight seal and Stainless steel outer jacket.