



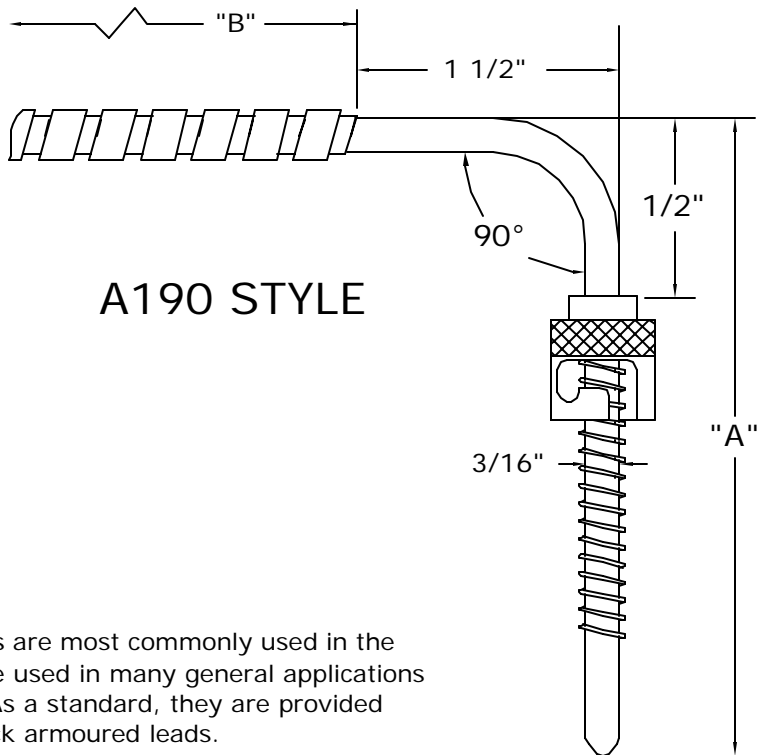
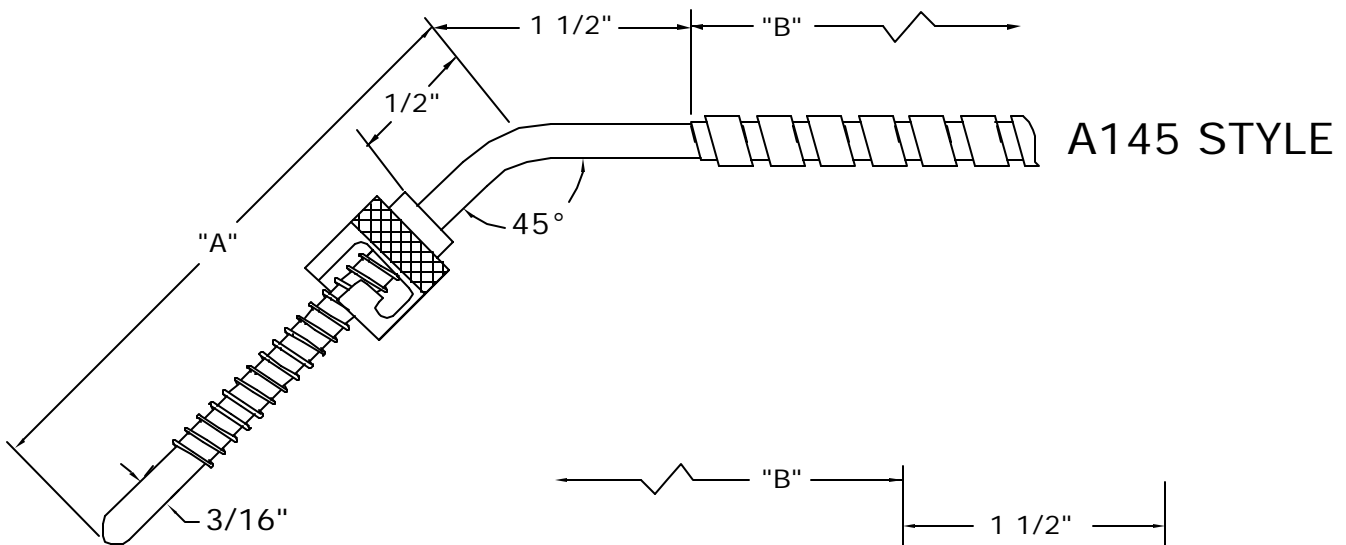
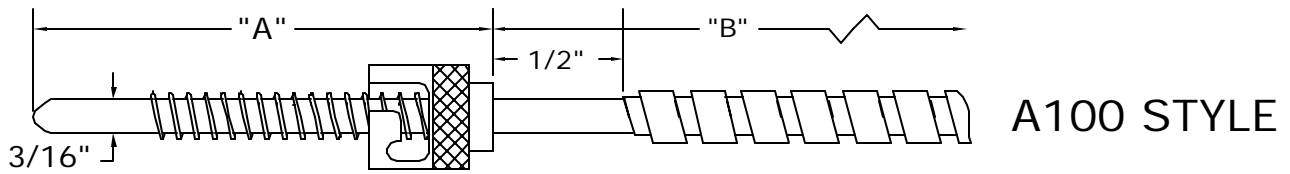
Heat Transfer technology Worldwide

# Section B

## Plastics Industry Thermocouples and RTDs

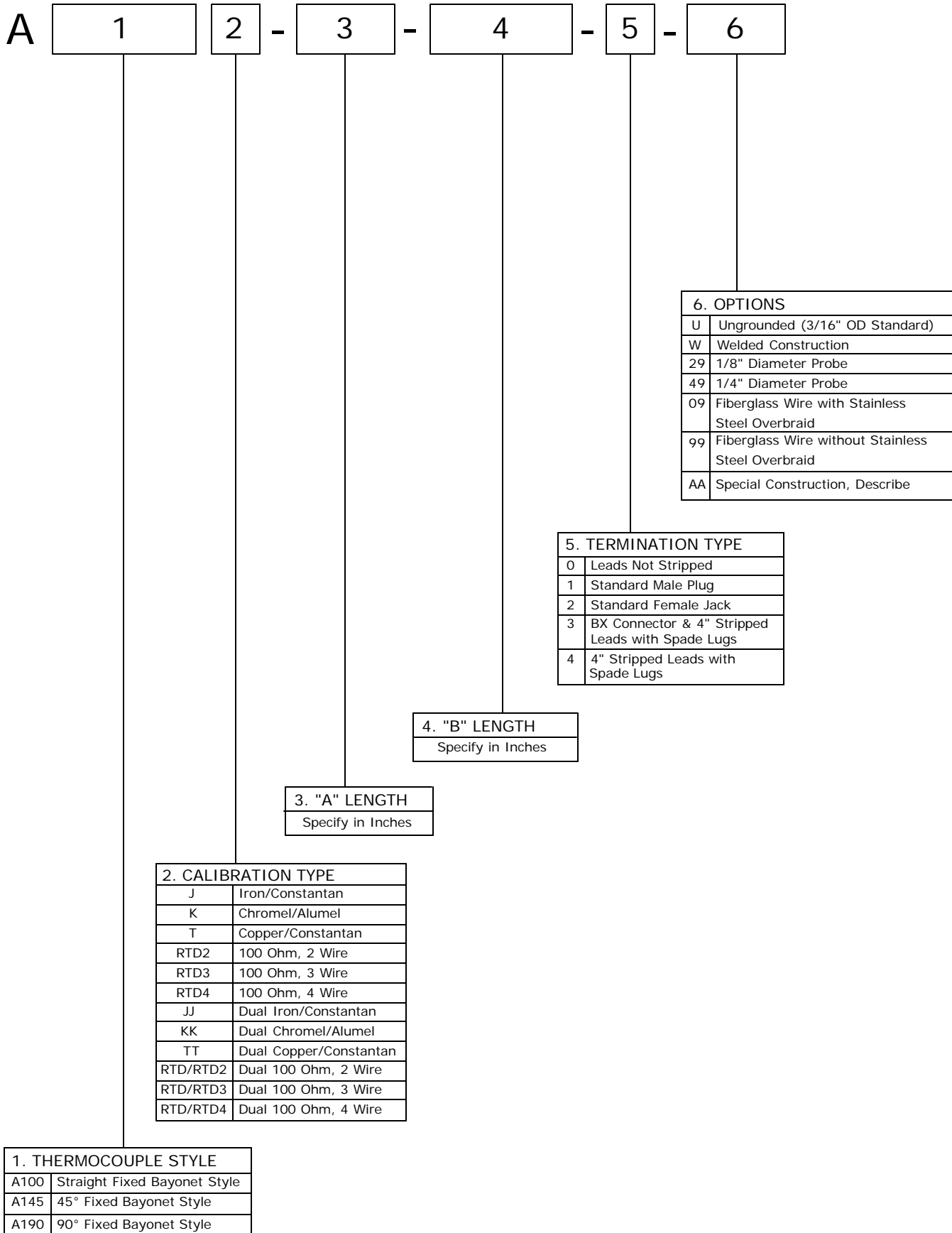
<b>Fixed Bayonet Style Thermocouples</b>	<b>B-1</b>
<b>Fixed Compression Style Thermocouples</b>	<b>B-3</b>
<b>Nozzle Style Thermocouples</b>	<b>B-5</b>
<b>Melt Style Thermocouples</b>	<b>B-7</b>
<b>Adjustable Bayonet Style Thermocouples</b>	<b>B-9</b>
<b>Tube and Wire Style Thermocouples</b>	<b>B-11</b>
<b>Gasket Style Thermocouples</b>	<b>B-13</b>
<b>Ring Style Thermocouples</b>	<b>B-15</b>
<b>Under The Band Style Thermocouples</b>	<b>B-17</b>
<b>Thermocouple Extension Cables</b>	<b>B-19</b>
<b>Pipe Clamp Adaptors</b>	<b>B-21</b>

# FIXED BAYONET THERMOCOUPLES AND RTDs

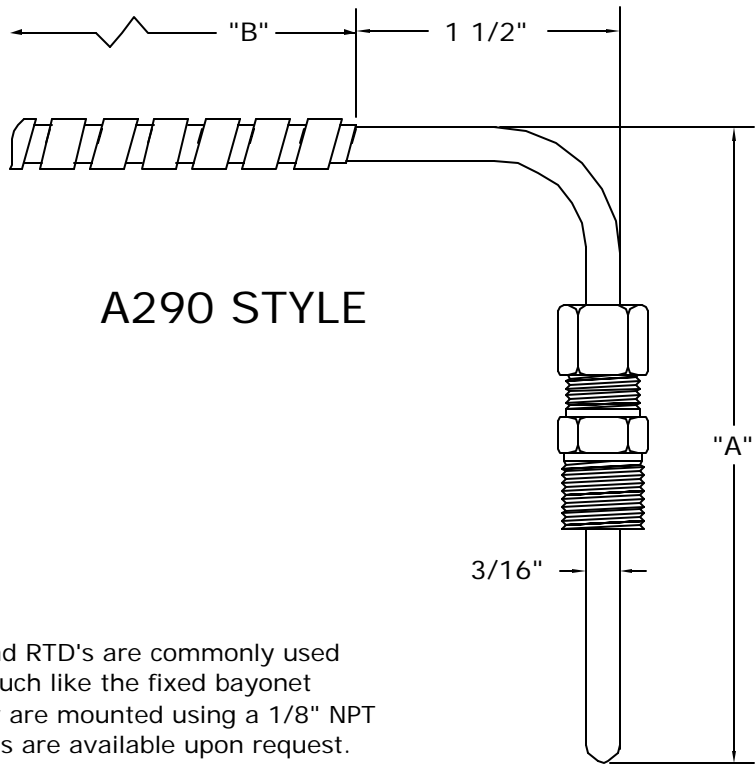
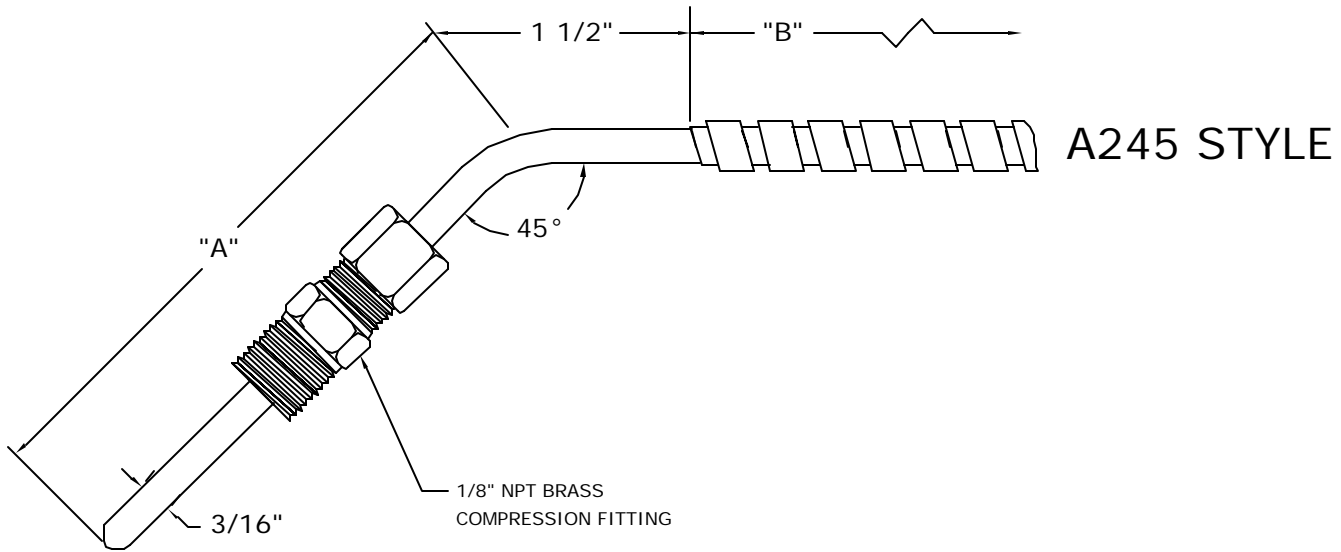
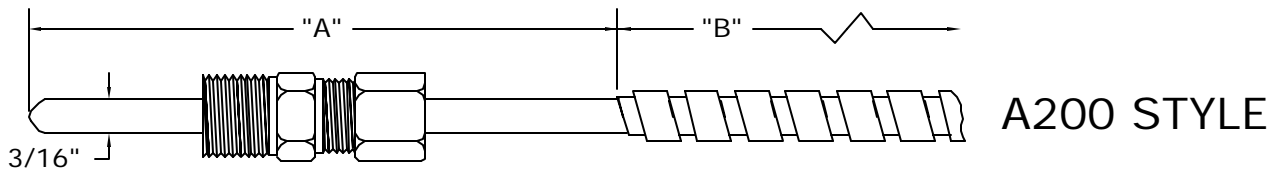


Fixed bayonet thermocouples and RTD's are most commonly used in the Plastic Processing Industry. They can be used in many general applications where a bayonet adaptor is preferred. As a standard, they are provided with a 316SS sheath with SS square lock armoured leads.

# FIXED BAYONET THERMOCOUPLES AND RTDs

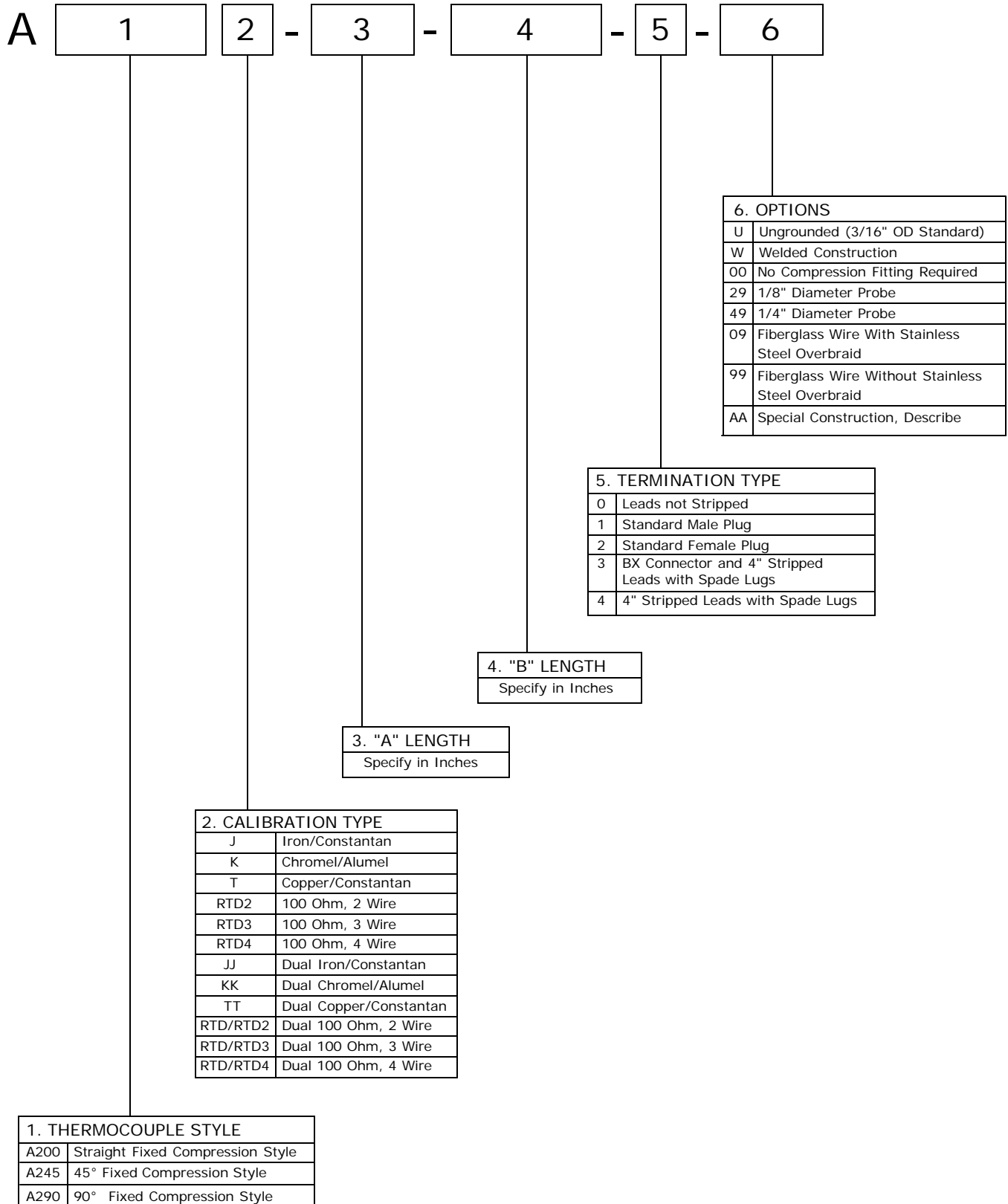


# FIXED COMPRESSION THERMOCOUPLES AND RTDs

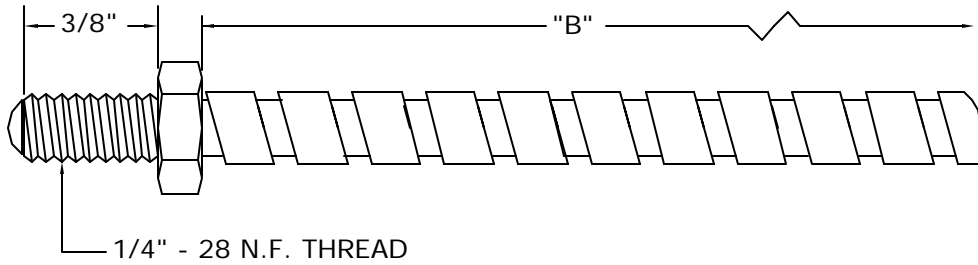


Fixed Compression thermocouple's and RTD's are commonly used into the Plastics Processing Industry much like the fixed bayonet style are. The difference being is they are mounted using a 1/8" NPT compression fitting. Other thread sizes are available upon request.

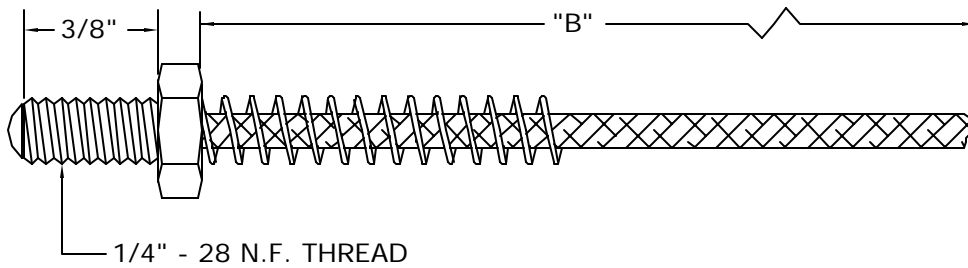
# FIXED COMPRESSION THERMOCOUPLES AND RTDs



# NOZZLE STYLE THERMOCOUPLES AND RTDs



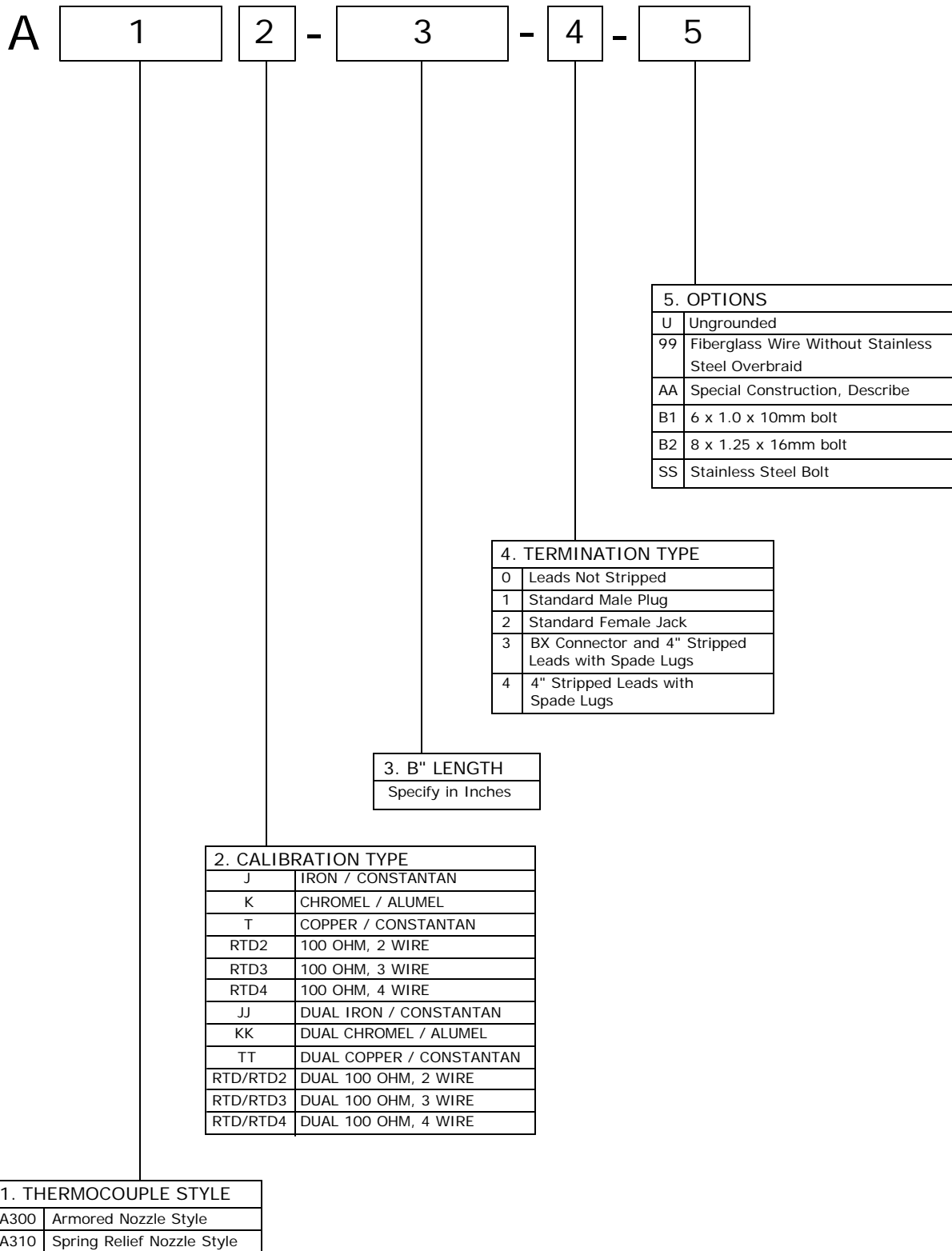
A300 STYLE



A310 STYLE

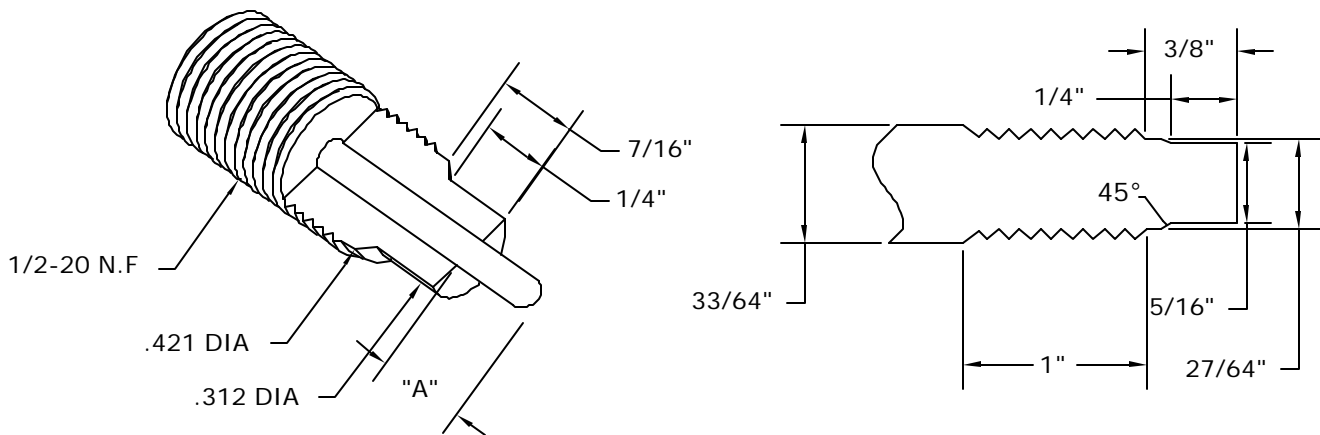
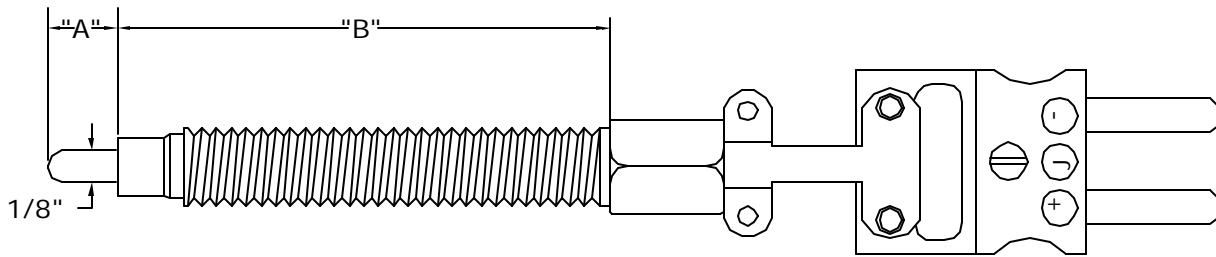
Threaded nozzle thermocouples and RTD's are commonly used to measure the temperature of the nozzle on an injection moulding machine. The A300 and A310 style is a versatile design and may be used in a wide variety of applications where space is a factor. Acrolab offers this style, as a standard, either with or without stainless steel armour and with a 1/4"-28N.F. threaded swivelling bolt. Other thread sizes, imperial or metric, are available.

# NOZZLE STYLE THERMOCOUPLES AND RTDs



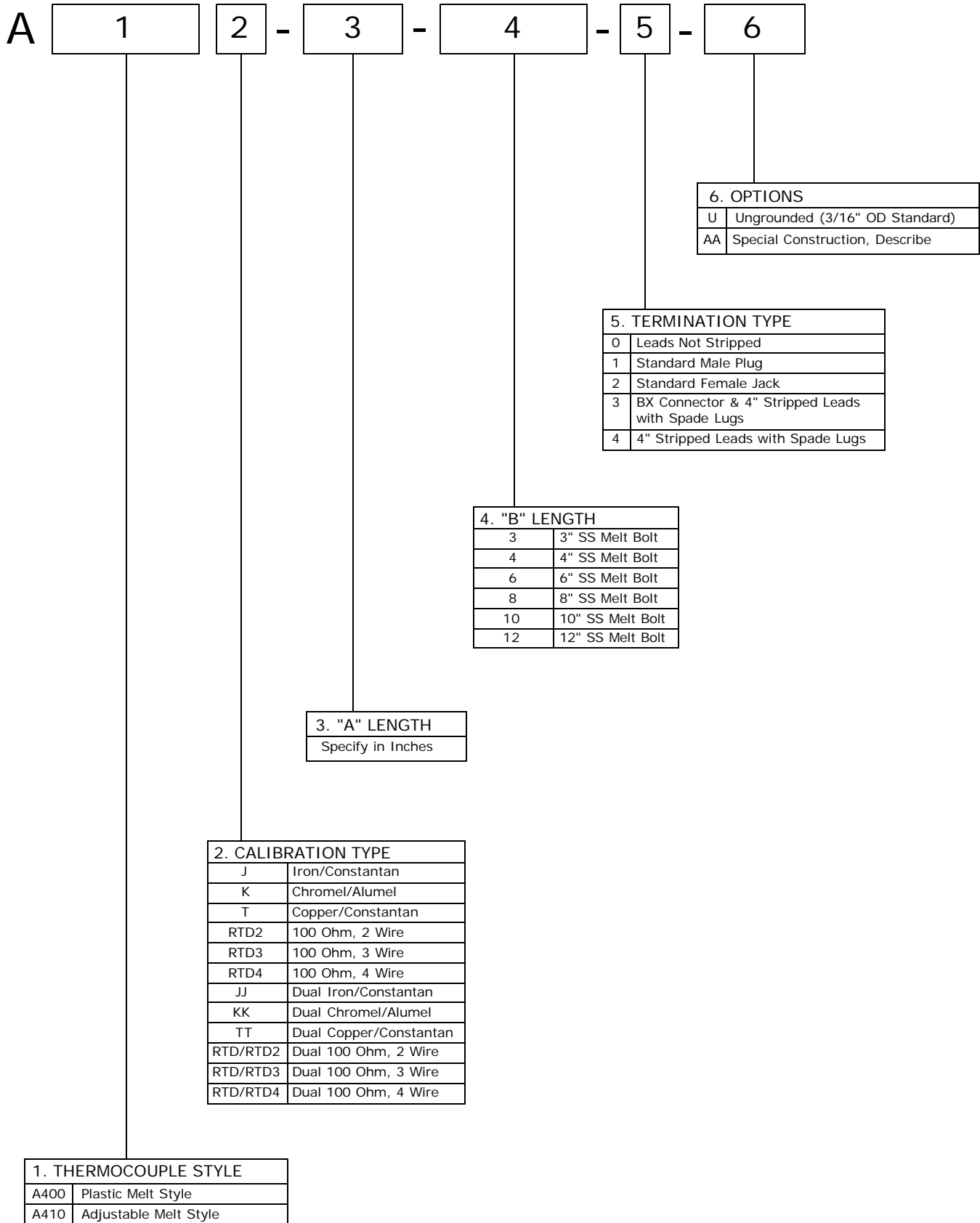
# PLASTIC MELT THERMOCOUPLES AND RTDs

## A400 STYLE

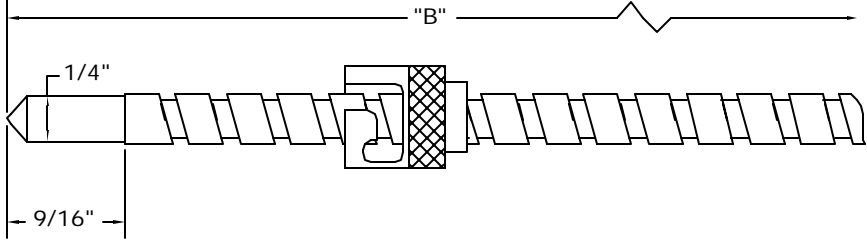


Acrolab's melt bolt style thermocouples and RTD's are designed to directly measure the melt temperature of plastic as it moves down the extruder barrel . They are commonplace in the extrusion and plastic injection moulding industries. Acrolab offers them in a variety of bolt lengths, as well as offering many other leadwire and termination options.

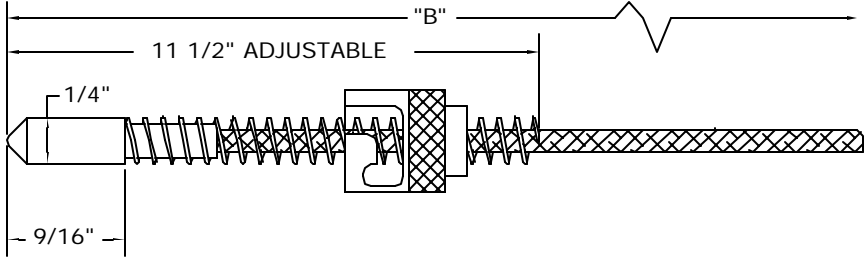
# PLASTIC MELT THERMOCOUPLES AND RTDs



# ADJUSTABLE BAYONET STYLE THERMOCOUPLES AND RTDs



A500 STYLE



A510 STYLE

Acrolab's adjustable bayonet style thermocouples and RTD's are designed for applications where quick installation and disconnect is required with the use of a bayonet adaptor. Acrolab offers them with SS armour allowing the sensor to be fully adjustable along its entire "B" length, or with a 12" long spring. Metric dual slot caps are available upon request.

# ADJUSTABLE BAYONET STYLE THERMOCOUPLES AND RTDs

A 1 - 2 - 3 - 4 - 5

1. THERMOCOUPLE STYLE	
A500	Armored Adjustable Bayonet Style
A510	Spring Adjustable Bayonet Style

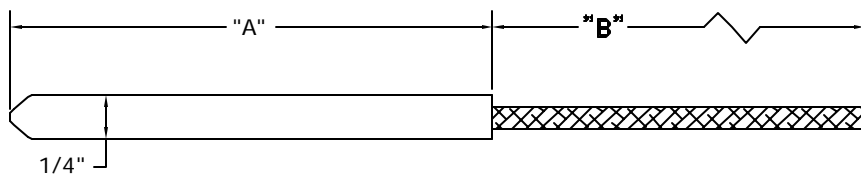
2. CALIBRATION TYPE	
J	Iron/Constantan
K	Chromel/Alumel
T	Copper/Constantan
RTD2	100 Ohm, 2 Wire
RTD3	100 Ohm, 3 Wire
RTD4	100 Ohm, 4 Wire
JJ	Dual Iron/Constantan
KK	Dual Chromel/Alumel
TT	Dual Copper/Constantan
RTD/RTD2	Dual 100 Ohm, 2 Wire
RTD/RTD3	Dual 100 Ohm, 3 Wire
RTD/RTD4	Dual 100 Ohm, 4 Wire

3. B" LENGTH
Specify in Inches

4. TERMINATION TYPE	
0	Leads Not Stripped
1	Standard Male Plug
2	Standard Female Jack
3	BX Connector & 4" Stripped Leads with Spade Lugs
4	4" Stripped Leads with Spade Lugs

5. OPTIONS	
U	Ungrounded (3/16" OD Standard)
AA	Special Construction, Describe
29	1/8" Diameter Probe
39	3/16" Diameter Probe
99	Fiberglass Wire Without Stainless Steel Overbraid

# PROBE STYLE TUBE AND WIRE THERMOCOUPLES AND RTDs



A520 STYLE

Acrolab's A520 style Thermocouple's and RTD's are a low cost tube and wire alternative to Magnesium Oxide (MgO) styles. They are available in the common calibrations for Thermocouples as well as 2, 3 or 4 wire for RTD's.

# PROBE STYLE TUBE AND WIRE THERMOCOUPLES AND RTDs

A

1      2 - 3      4      5      6

1. THERMOCOUPLE STYLE	
A520	Probe Style Tube and Wire

2. CALIBRATION TYPE	
J	IRON / CONSTANTAN
K	CHROMEL / ALUMEL
T	COPPER / CONSTANTAN
RTD2	100 OHM, 2 WIRE
RTD3	100 OHM, 3 WIRE
RTD4	100 OHM, 4 WIRE
JJ	DUAL IRON / CONSTANTAN
KK	DUAL CHROMEL / ALUMEL
TT	DUAL COPPER / CONSTANTAN
RTD/RTD2	DUAL 100 OHM, 2 WIRE
RTD/RTD3	DUAL 100 OHM, 3 WIRE
RTD/RTD4	DUAL 100 OHM, 4 WIRE

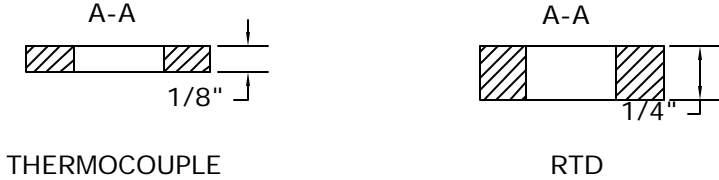
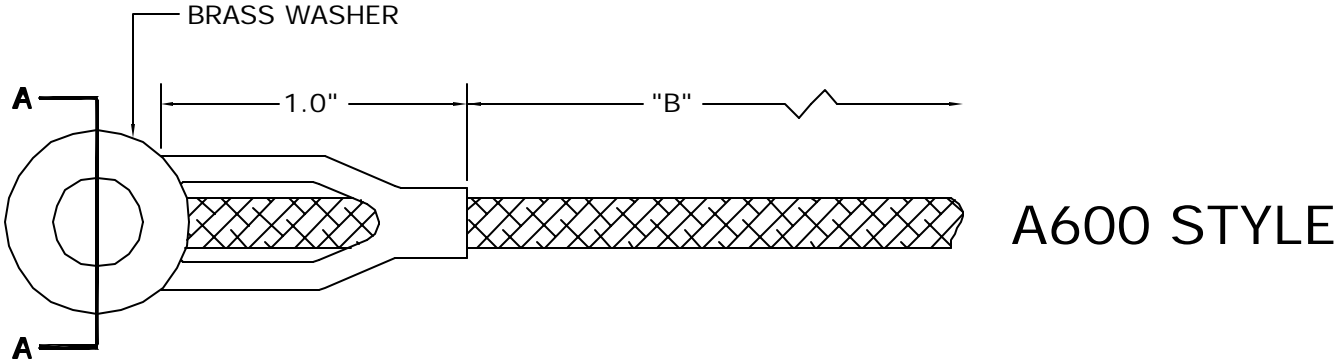
3. "A" LENGTH
Specify in Inches

4. "B" LENGTH
Specify in Inches

5. TERMINATION TYPE	
0	Leads Not Stripped
1	Standard Male Plug
2	Standard Female Jack
3	BX Connector & 4" Stripped Leads with Spade Lugs
4	4" Stripped Leads with Spade Lugs

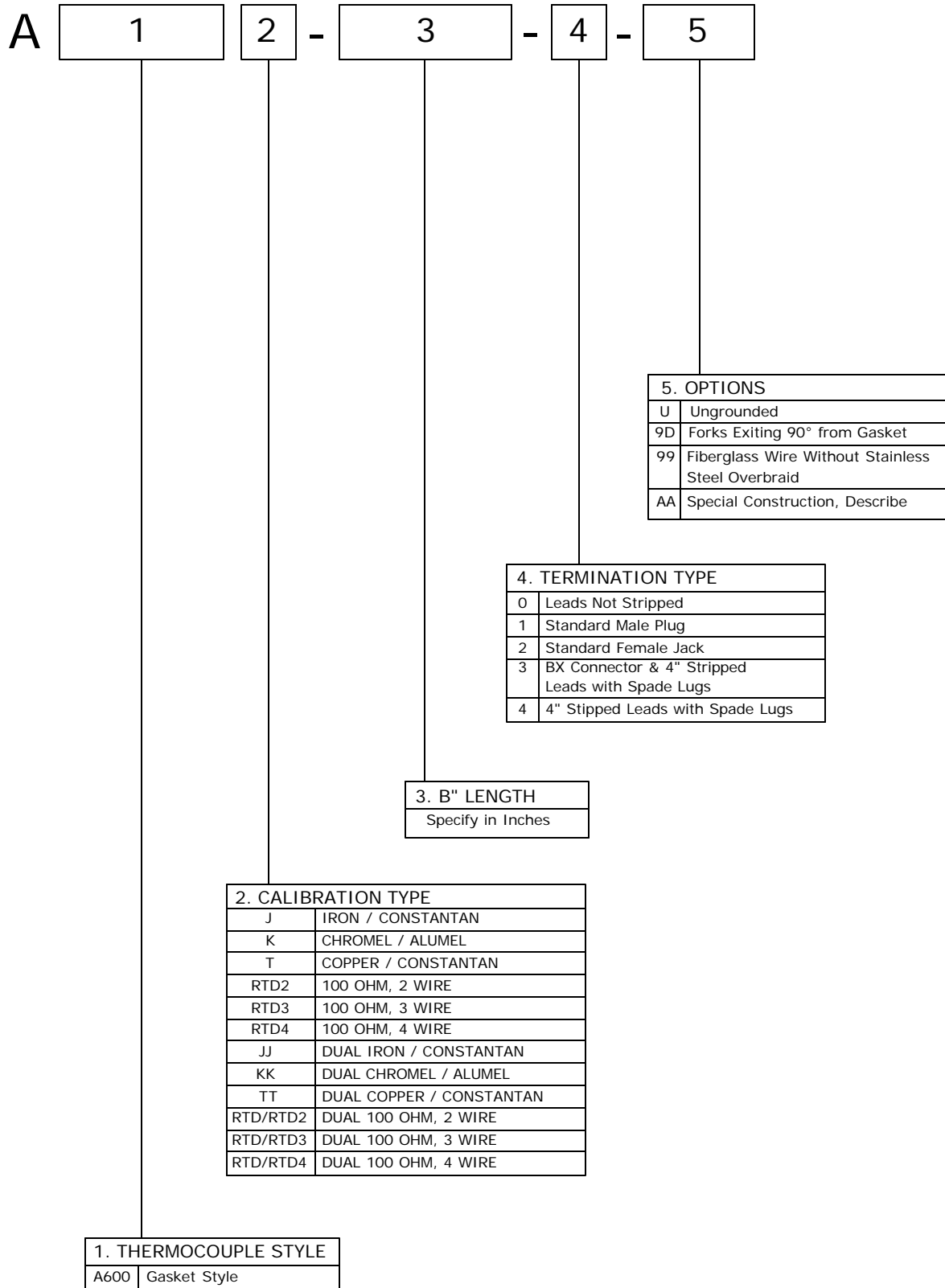
6. OPTIONS	
U	Ungrounded (3/16" OD Standard)
W	Welded Construction
29	1/8" Diameter Probe
39	3/16" Diameter Probe
99	Fiberglass Wire Without Stainless Steel Overbraid
AA	Special Construction, Describe

# GASKET STYLE THERMOCOUPLES AND RTDs

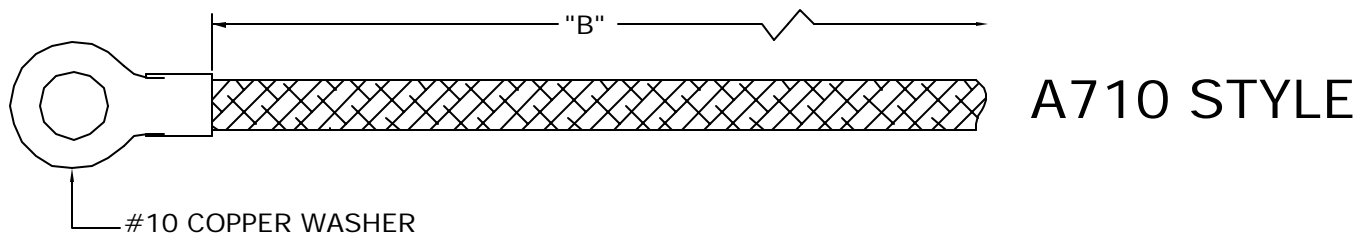
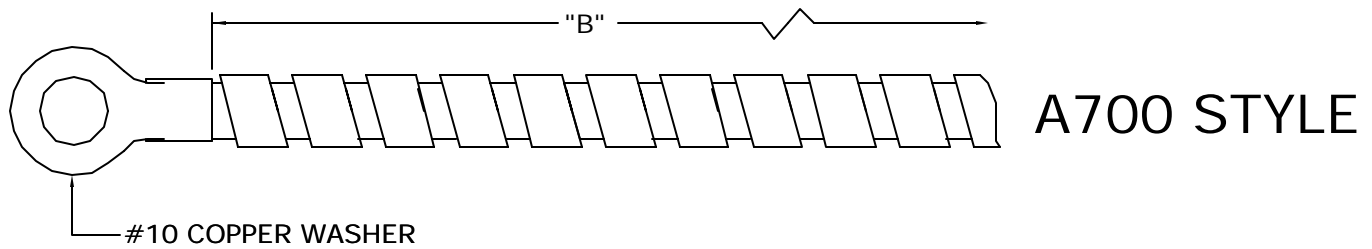


Acrolab's gasket style thermocouples and RTD's are a more heavy duty version of the A700 and A710 ring style. The heavy duty brass washer is reinforced with a strain relief fork crimped to the leadwire. They are ideal for surface temperature measurement as are the ring style sensors.

# GASKET STYLE THERMOCOUPLES AND RTDs

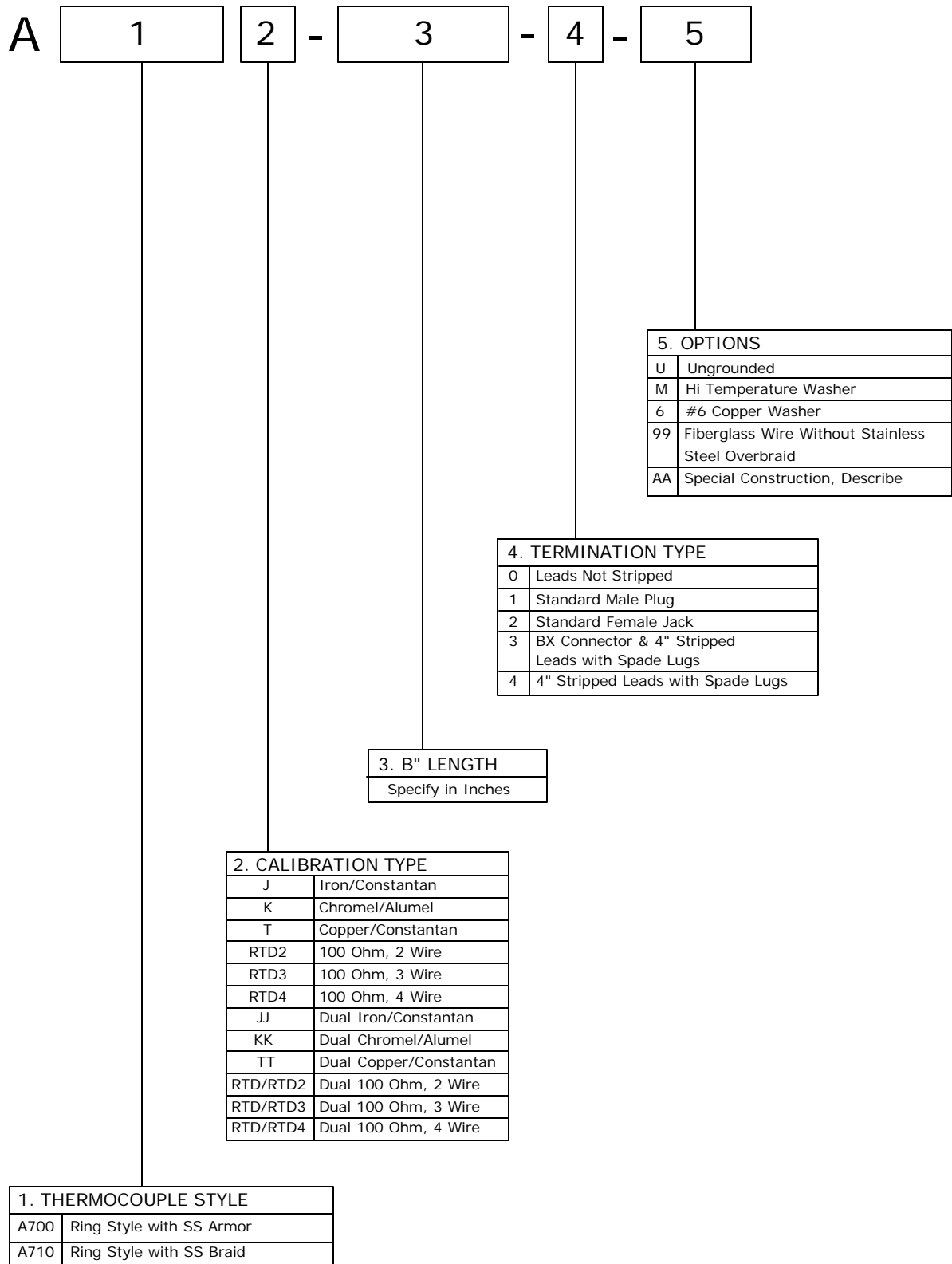


# RING STYLE THERMOCOUPLES AND RTDs

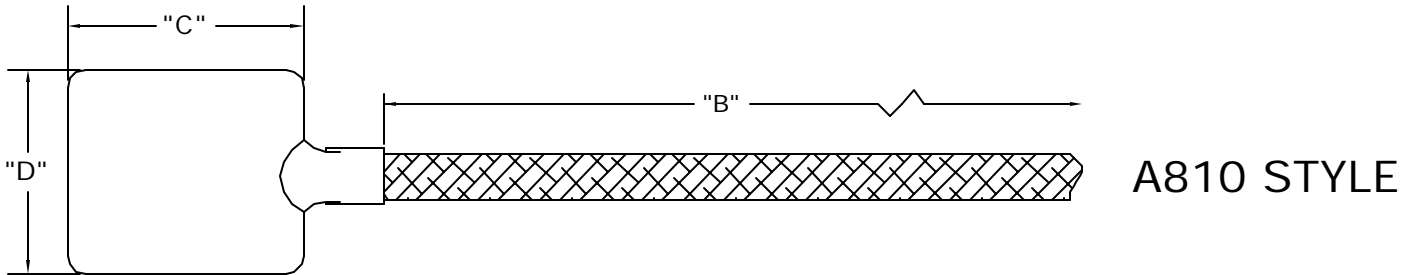
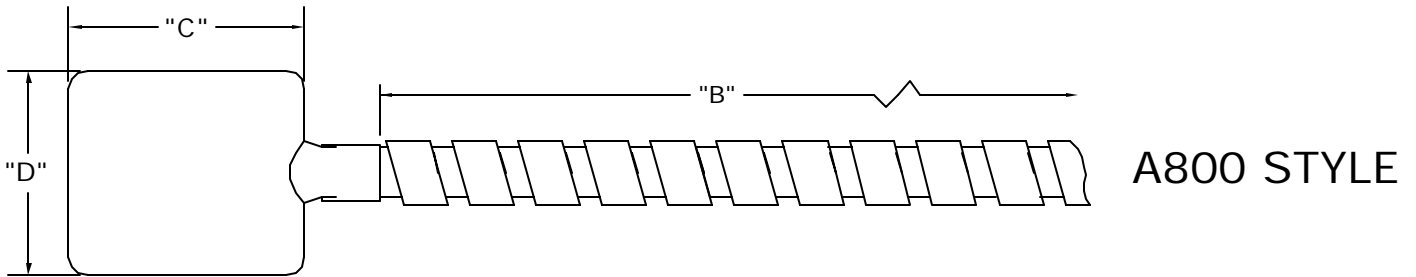


Acrolab's ring style thermocouples and RTD's are designed for any surface measurement application. They are attached to a surface simply with a screw or bolt. They are available with SS Armoured leads or SSOB leads. Many washer sizes and lead types are available upon request.

# RING STYLE THERMOCOUPLES AND RTDs

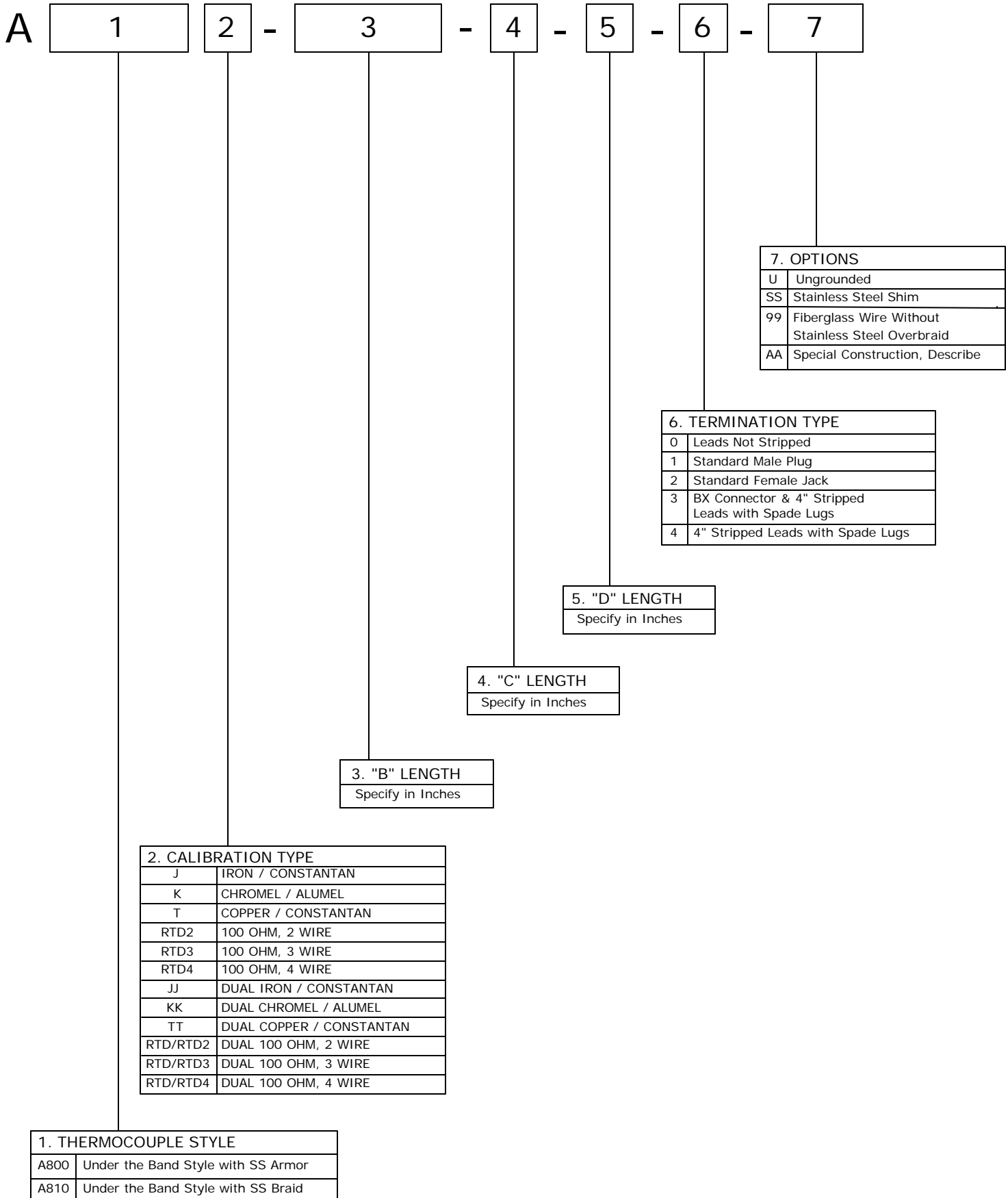


# UNDER THE BAND STYLE THERMOCOUPLES AND RTDs

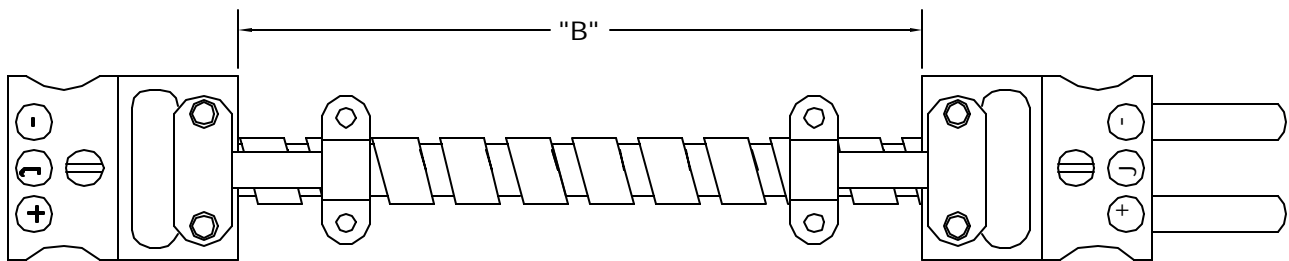


Under the Band style thermocouples and RTD's are a variety of surface measurement sensors. They are commonly used in pipes and held in place with the use of a pipe clamp, or on barrels and nozzles under a band heater. Acrolab offers these with a brass shim as a standard, but are available with SS upon request.

# UNDER THE BAND STYLE THERMOCOUPLES AND RTDs



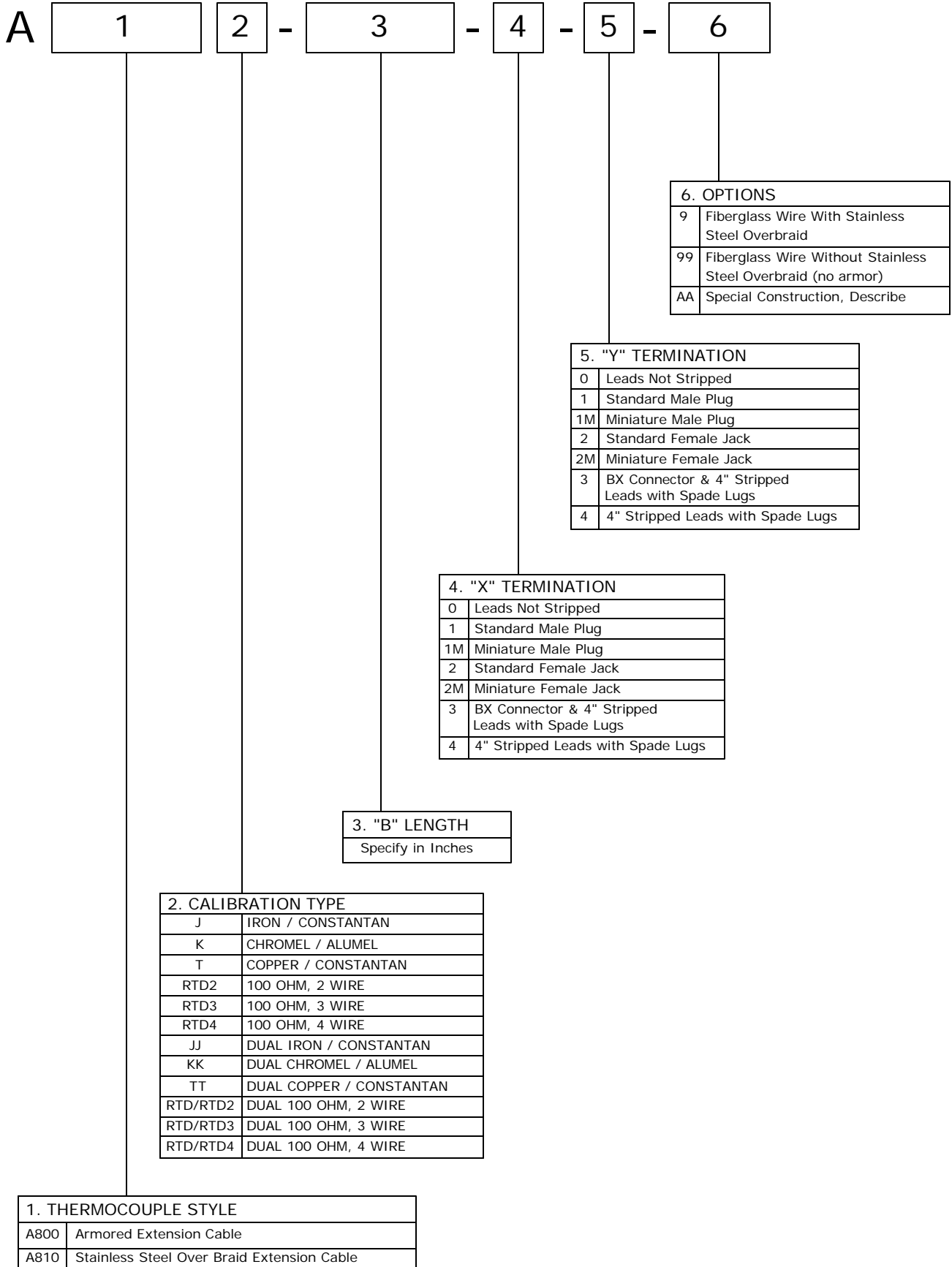
# THERMOCOUPLE AND RTD EXTENSION CABLES



**A900 STYLE**

Thermocouple and RTD extension cables are available with a wide variety of leadwires and protection such as SS armour and over braid, as well as many termination options and lengths. They are used to provide connections between sensors, jack panels or various instrumentation.

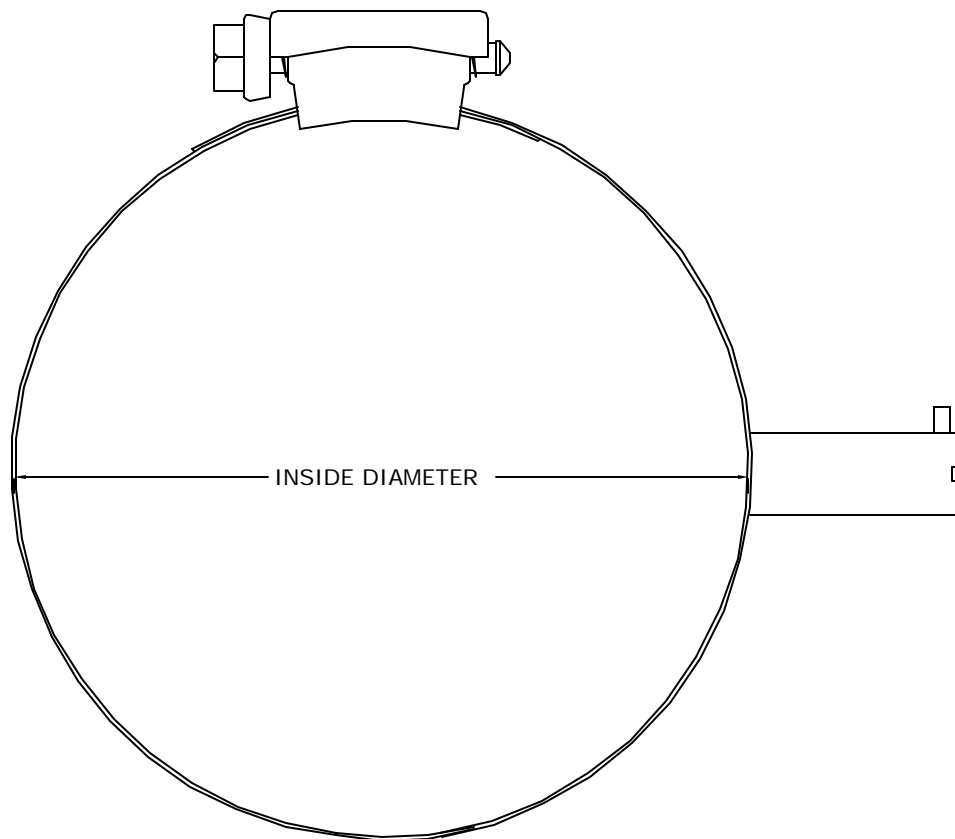
# THERMOCOUPLE AND RTD EXTENSION CABLES



# PIPE CLAMP ADAPTORS

Pipe clamps are used in conjunction with Acrolab's A100, A145, A190, A500 and A510 series bayonet style thermocouples. They are designed for temperature measurement on the outside of a pipe.

Pipe clamps are an economical and efficient design that requires no machining or tapping to mount them. Custom diameters and bayonet adaptor locations are also available.



PART NUMBER	FITS OUTSIDE DIAMETER
BA-20	1/2" TO 7/8"
BA-21	7/8" TO 1 1/4"
BA-22	1 1/4" TO 2"
BA-23	2" TO 2 1/2"
BA-24	2 1/4" TO 3 1/4"
BA-25	3 1/4" TO 4 1/4"
BA-26	4 1/4" TO 5"